

《湖北省钢筋套筒灌浆连接施工工艺指南》

1

1.1

1.2

1.3

2

2.1 monolithic precast concrete structure

2.2 grout sleeve splicing of rebars

2.3 cementitious grout for rebar sleeve splicing

2.4 mortar for plugging and partition

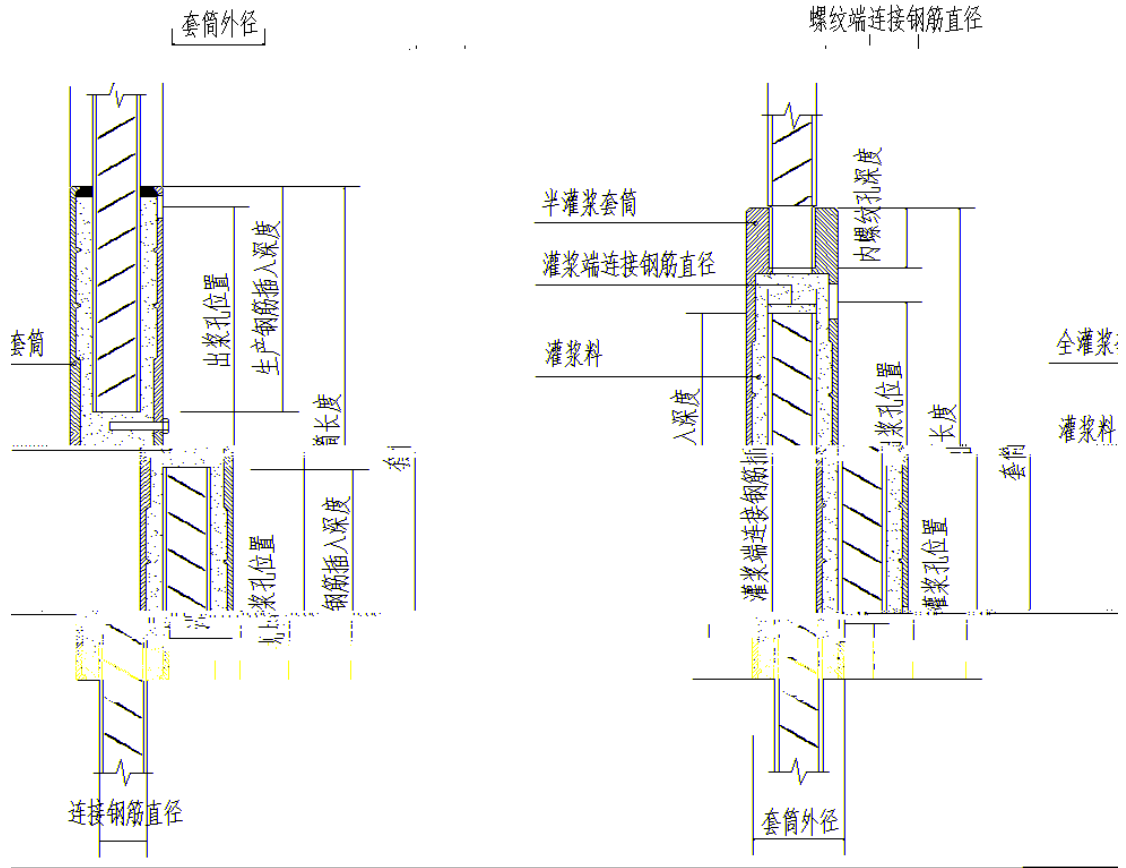
2.5 dry-mixed bedding mortar

2.6 grouting plumpness

3

3.1

3.1.1



1

3.1.2

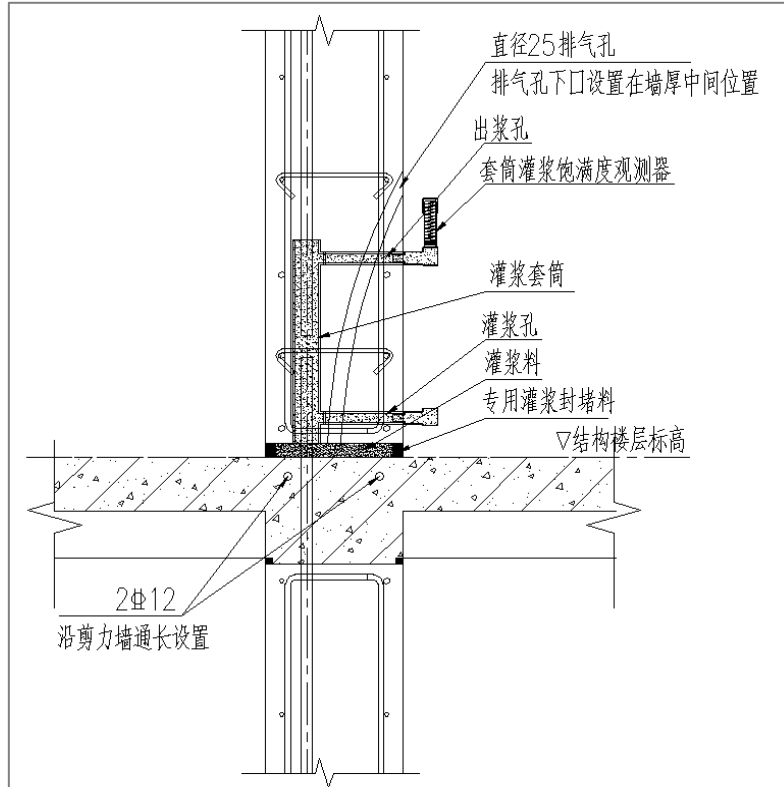
1

2

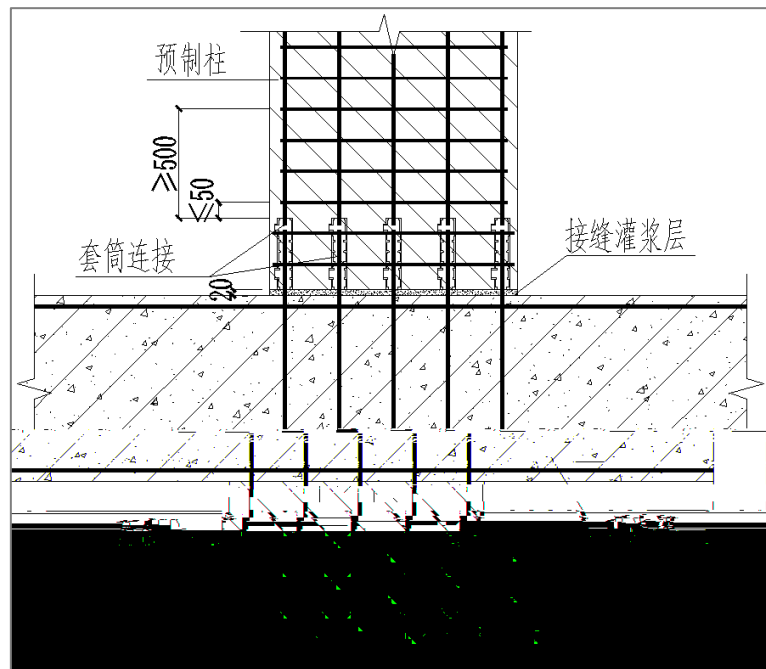
3

3.2

3.2.1



3



4

3.2.2

3.2.3.1 2

: GB1499.2 GB13014

12mm 40mm

3.2.3.2 JG/T 398

3.2.3.2

8

3.2.3.2

(mm)	mm)
12 25	10
28 40	15

3.2.3.3

JG/T 408

3.2.3.4

3.2.3.5 C30

3.2.3.6 JGJ 355

3.2.3.7

15mm 20mm

3.2.3.8 25mm

3.2.3.9

3.2.3.10

3.2.3.11

3.2.3.12

3.2.3.13

3.2.3.14

JGJ 107

3.2.3.15

3.2.3.16

1.5m

3.2.3.17

3.2.3.18

5

0

30

3.2.3.19

30min

3.3

3.3.1

3.3.1.1

300

40mm×40mm×160mm

3.3.1.2

1d 3d 28d

2h

70.7mm

3.3.1.3

3.3.2

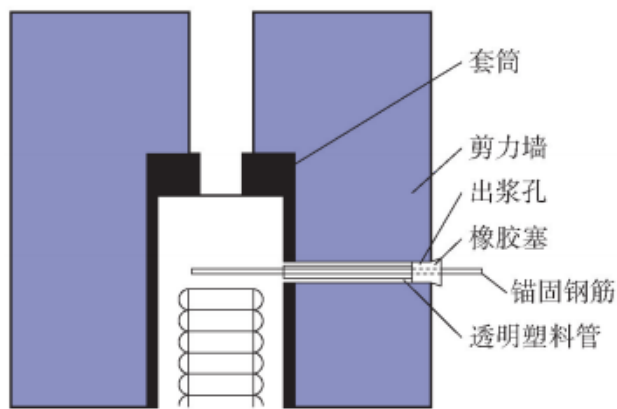
3.3.2.1

X

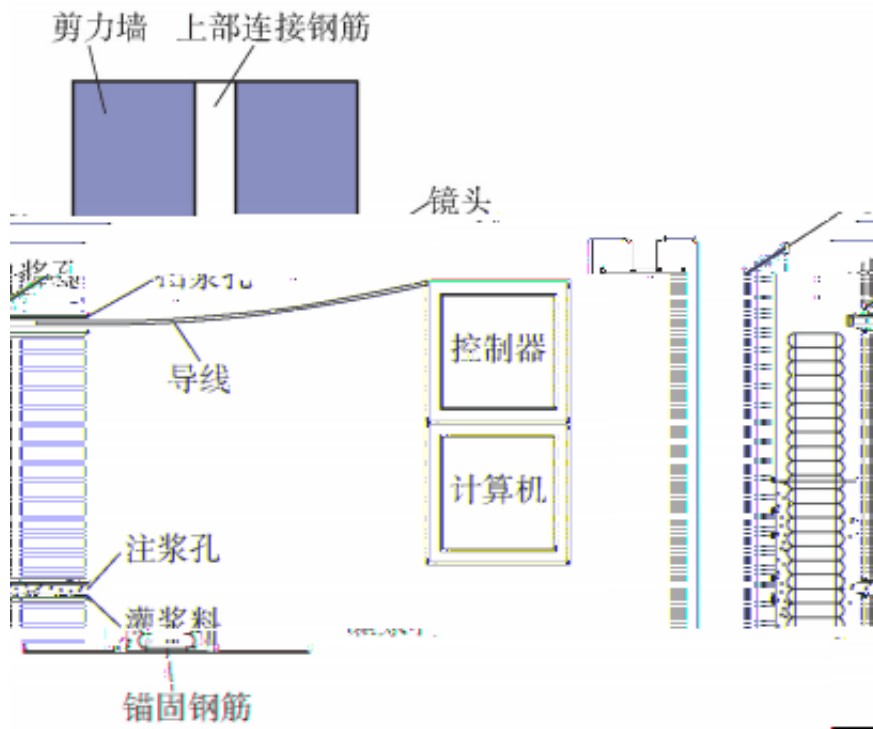
X

1

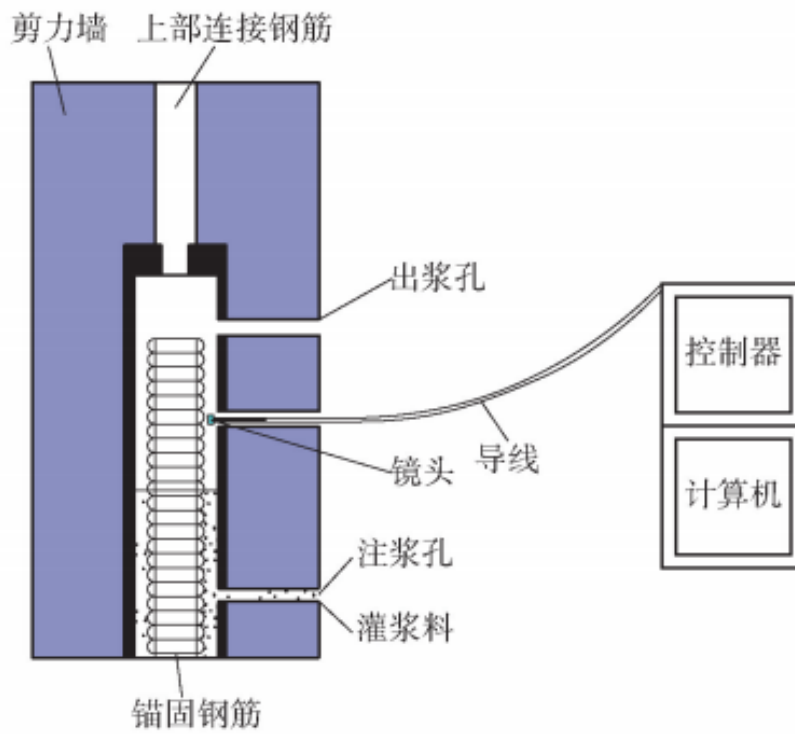
3d



5



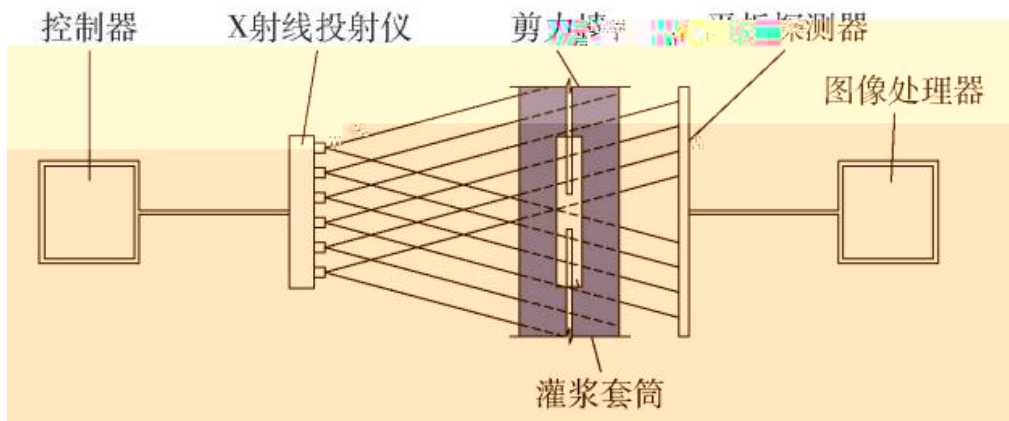
8



9

4 X

X



10 X

3.3.3

3.3.3.1

1

2